

## High Power LiPo Battery/LED Colour Uplight with Wireless Control for Indoor/Outdoor Use

Bright, rich colour from a portable battery powered LED light with wireless control, rated for outdoor use (IP65). Very high brightness 2100 lumens will light up trees, architectural features, marquees & wall-washing. Power or charge directly from mains or in 6-way flight case.

### Key Features

- High intensity 2100 lumens capability - attractive full white
- Red, Green, Blue + White LEDs for colour depth & efficiency
- Battery life exceeding 8 hours up to 24 hours
- *Full recharge less than 3 hours from flat* (LiPo Technology)
- Wireless DMX control with master/slave operation
- WiFi remote control using most WiFi enabled mobile devices
- Intuitive & simple operation – designed for repeated rental
- Removable polished steel light shroud or custom colour!



### Light Head

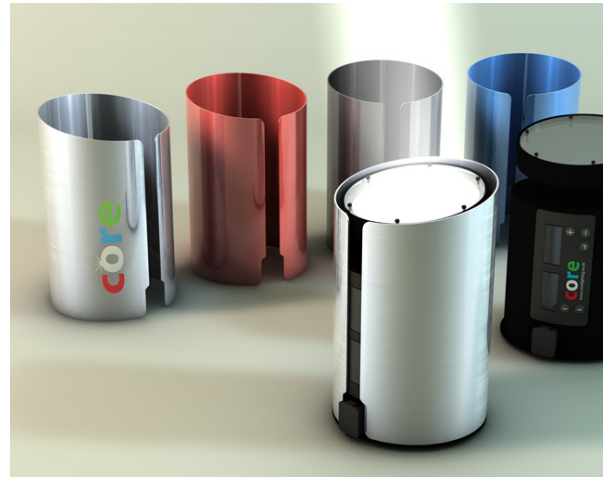
- RGBW Colour Mixing Head using Cree & Seoul Semiconductor high-brightness LED chips
- Exceptionally saturated colours, mixed using optic lenses with uniform colour rendering
- Standard 8-10 hour life. Other modes allow increased lifespan (up to 24 hours possible)
- LED output up to 2100lm matching market-leading mains-powered units
- 4.2Bn colour combinations, including soft hues of white. 13-bit dimming curve, 488Hz for HDTV work
- Standard 12° beam optic. Simple optional change to 30° (medium), 60° (wide). Others available
- Head adjustment +/- 45° allows fine-tuning of beam direction
- LED life >30,000 hours

### Power Source

- Can operate from mains or battery power. Also capable of battery charging whilst running LED head
- Built-in power supply. Input range 85-264VAC 47/63Hz with “kettle” base connector & Powercon option
- Recharges in around 3-4 hours enabling same day turnaround.
- Lithium Polymer (LiPo) Cells. Optional 1.5 x lifetime battery capacity (over 15 hours full colour cycling).
- Continuous battery operation on dropout of mains supply
- Optimal battery management plus in-built battery voltage, current & temperature monitoring

## Mechanical

- Removable polished stainless steel shroud
- Shroud available in brushed, white, black, custom colour
- IP65 weatherproof black inner unit even without shroud
- Fully internal antenna for robustness – unbreakable
- Carry-handle deploys from top of unit
- Robust locking point on rear for security chain/padlock
- Pivoting head +/-45 deg for fine-tuning light direction
- **Weight 6.5Kg.** Size diameter 172mm x height 330mm.
- **6-Way flight case/charging option** – 69Kg fully loaded
- Compact case dimensions 709 x 598 x 459mm



Standard polished stainless shroud. Shroud removed = black finish.  
Interchangeable shrouds for custom colours

## Control

- Control via keypad, W-DMX(Wireless Solutions) or WiFi
- Simple & intuitive controls for non-experts
- Set of pre-programmed fade sequences
- Colour mixing variable to precise shades including white pastels
- Control using WiFi device (eg mobile, iPhone, iPad, laptop)
- Keypad lock prevents unauthorised access
- Built-in test routines improve diagnostics and warehouse turnaround



## Wireless DMX & WiFi

- Each light responds to Wireless Solutions W-DMX as a slave
- W-DMX Transmitter Master option (Upgrade option) eliminates need for lighting desk
- WiFi (802.11b/g) interface (Upgrade option) sets up a Master W-DMX unit to control many units
- All wireless capability is fully internal, not an external add-on



Beautiful white tones using white LEDs mixed with colour



High intensity, deeper colours & lens options means fewer units required to light a space